

# Comparative social policy indicators

- beyond GDP and unemployment rates

**Daniel Fredriksson** [daniel.fredriksson@sofi.su.se](mailto:daniel.fredriksson@sofi.su.se)

**Sebastian Sirén** [sebastian.siren@sofi.su.se](mailto:sebastian.siren@sofi.su.se)

The Swedish Institute for Social Research (SOFI), Stockholm University, Sweden

## The Social Policy Indicator Database (SPIN)

In development at the Swedish Institute for Social Research (SOFI), Stockholm University. SPIN includes several data modules covering core variables from:

- The Social Citizenship Indicator Program (SCIP)
- The Social Assistance and Minimum Income Protection Interim Dataset (SaMip)
- The Parental Leave Dataset (PAL)
- The Child Benefit Dataset (CBD)

# Social Rights and Institutional Indicators

What we collect: Institutional Social Rights data

- Operationalization of social rights as defined in national legislation

Sociological perspectives on welfare state development

- Development of citizenship (Marshall 1950)
- Explaining divergence among welfare states
- Moving beyond expenditure data measures
- Enabling causal analysis where institutions are taken to be mediating variables

## Driving forces

*e.g.*

**Economic development**  
**Class-based actors**  
**Globalisation**  
**Deindustrialisation**  
**Gender-based actors**  
**Demographic change**  
**Institutional structures**  
**Transnational actors**



## Institutions

*e.g.*

**Pensions**  
**Unemployment benefits**  
**Health care**  
**Sickness insurance**  
**Social assistance**  
**Educational systems**  
**Labour market regulation**  
**Family policy**

## Outcomes

*e.g.*

**Poverty**  
**Income inequality**  
**Health**  
**Employment**  
**Fertility**  
**Gender role norms**

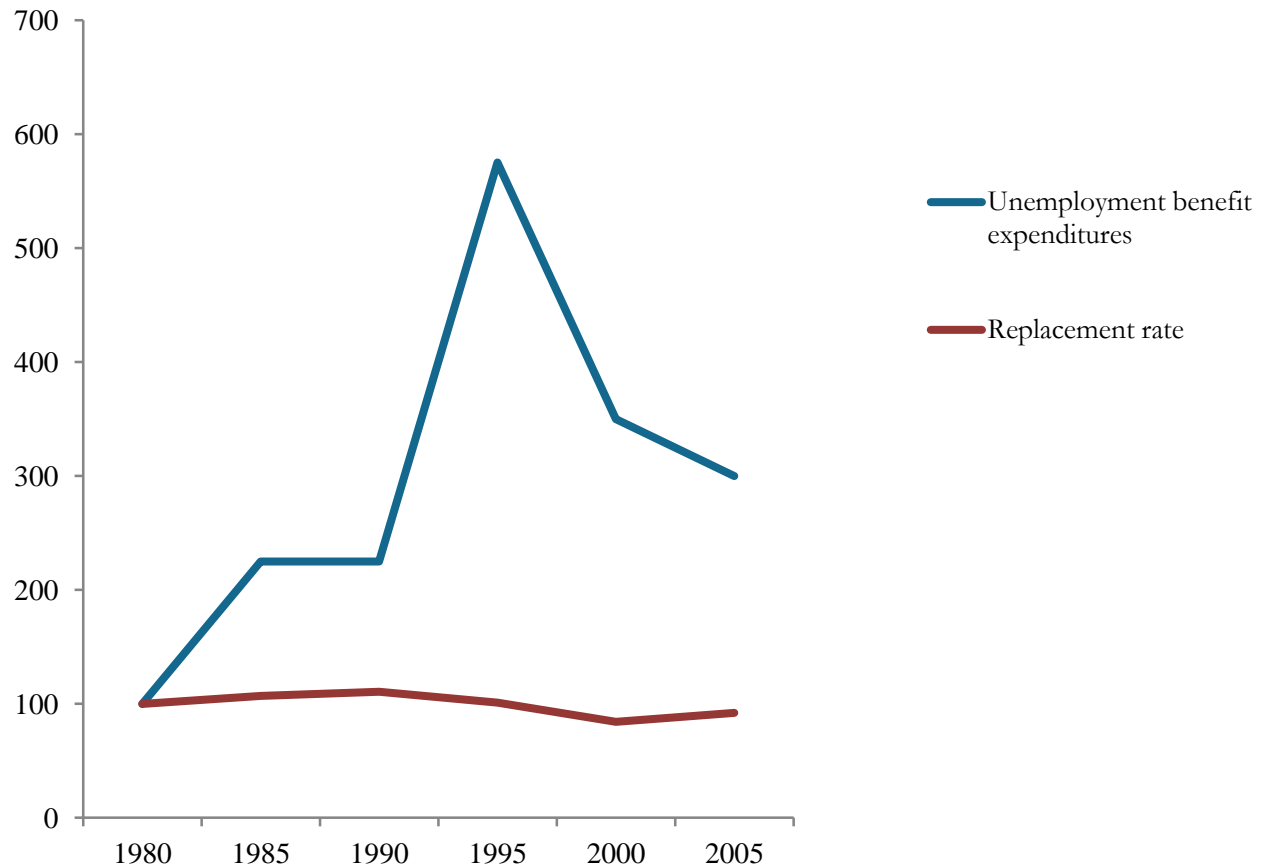
# Indicators from SCIP/SPIN

Data between 1930-2010 for 18 OECD countries (from 2005: 34 countries)

Social insurance programs:      Old Age Pensions  
  Sickness Cash benefits  
  Unemployment benefits  
  Work Accident benefits

- Benefit amounts (as replacement rate of a given wage)
  - Replacement rates calculated both gross and net of taxes for two family types: Single and Family (non-working spouse with two children).
- Duration of benefits
- Conditions (i.e. qualification requirements)
- Insurance coverage

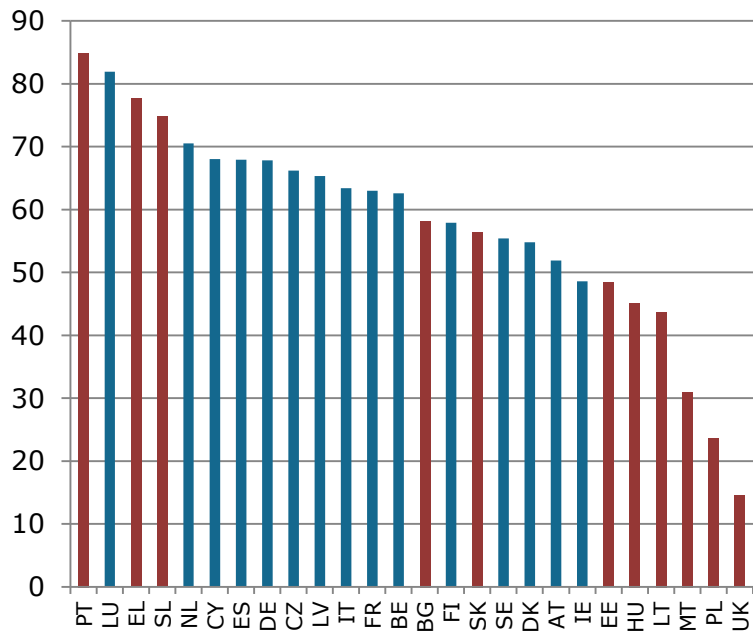
## Unemployment benefit expenditure in percent of GDP and unemployment insurance net replacement rate in Sweden 1980-2005 (index 100=1980)



Source: SCIP, SPIN

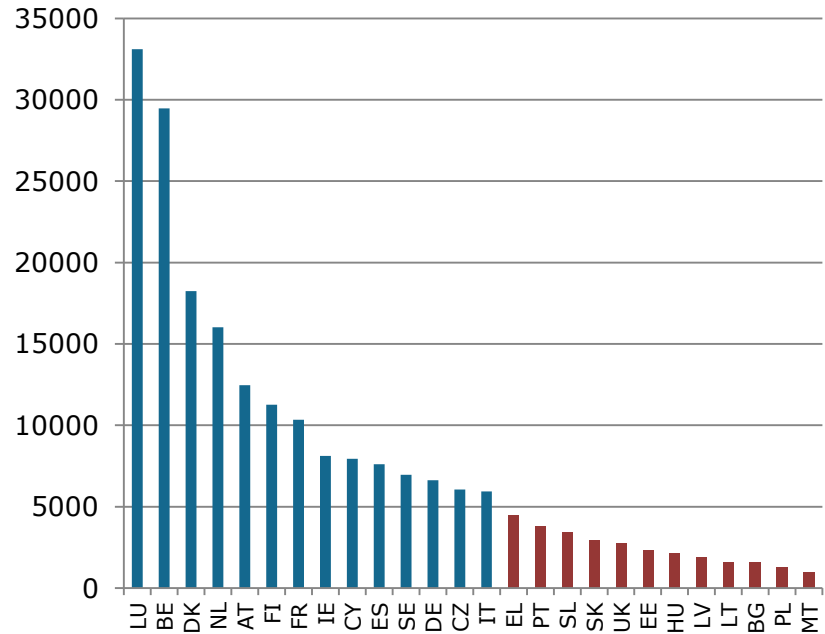
# Unemployment insurance net replacement rates and non means-tested unemployment benefit expenditure per unemployed person in selected EU Member States 2010

Net Unemployment social insurance replacement rate

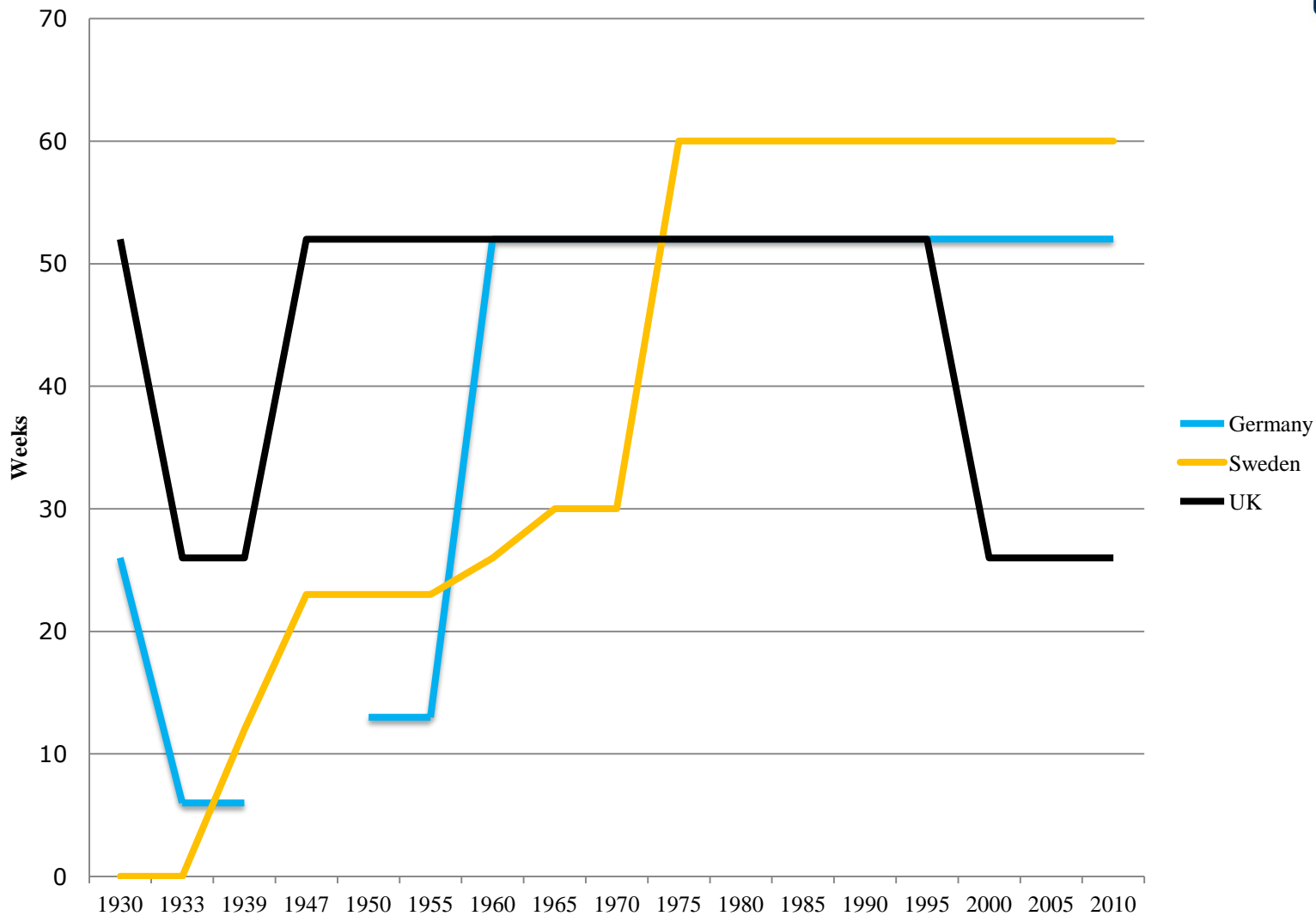


Source: SCIP, SPIN

Non means-tested unemployment benefit expenditure per unemployed person (PPPs)



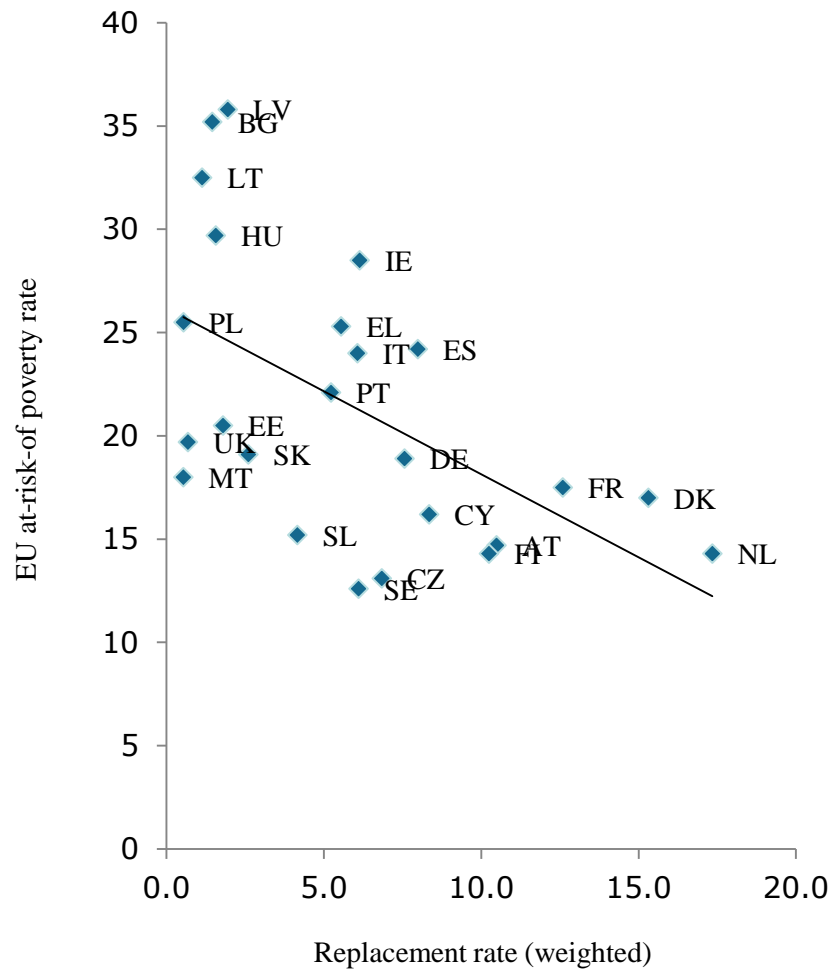
# Duration of Unemployment Benefits in three countries



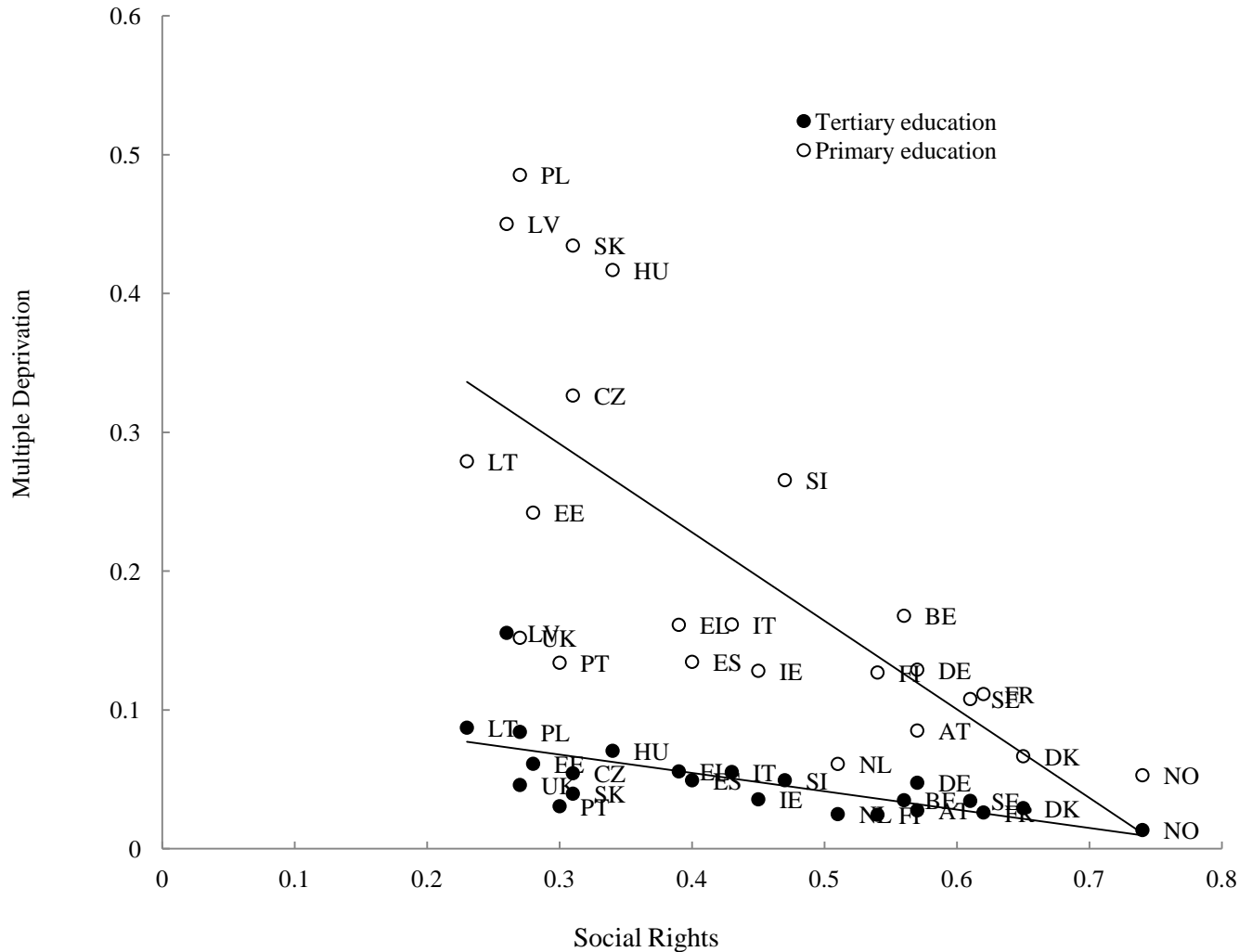
Source: SCIP, SPIN



Scatterplot of **social insurance** net replacement rates (unemployment and sickness, expenditure weighted) and the EU at-risk-of poverty rate, 2010



# The level of social rights and the rate of multiple deprivation according to educational attainment in 23 EU countries



Source: SPIN and EU-SILC (from Ferrarini, Nelson and Sjöberg, unpublished paper)

**Thank you for your attention!**

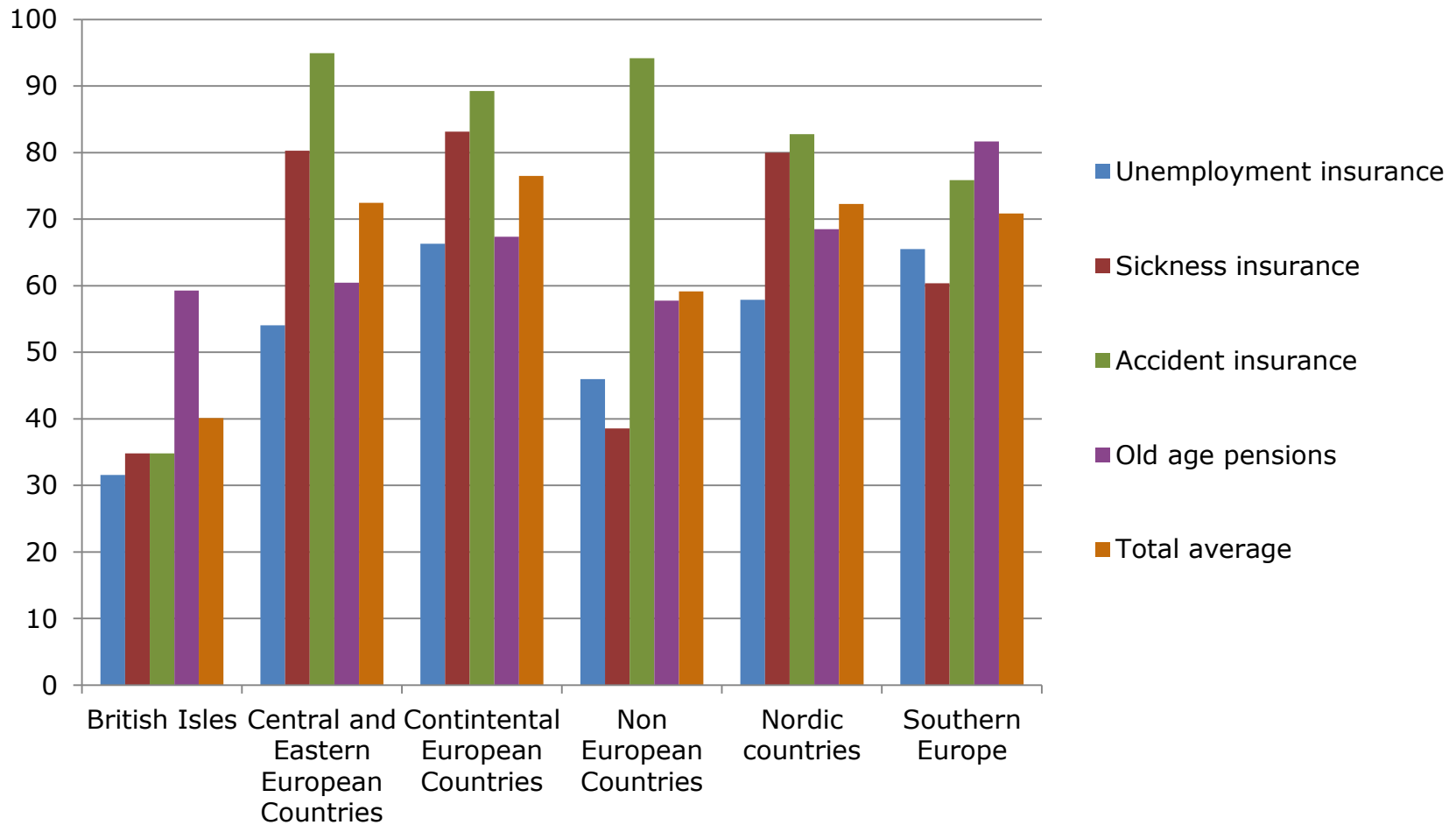
For additional information: [www.sofi.su.se/spin](http://www.sofi.su.se/spin)

**Daniel Fredriksson** [daniel.fredriksson@sofi.su.se](mailto:daniel.fredriksson@sofi.su.se)

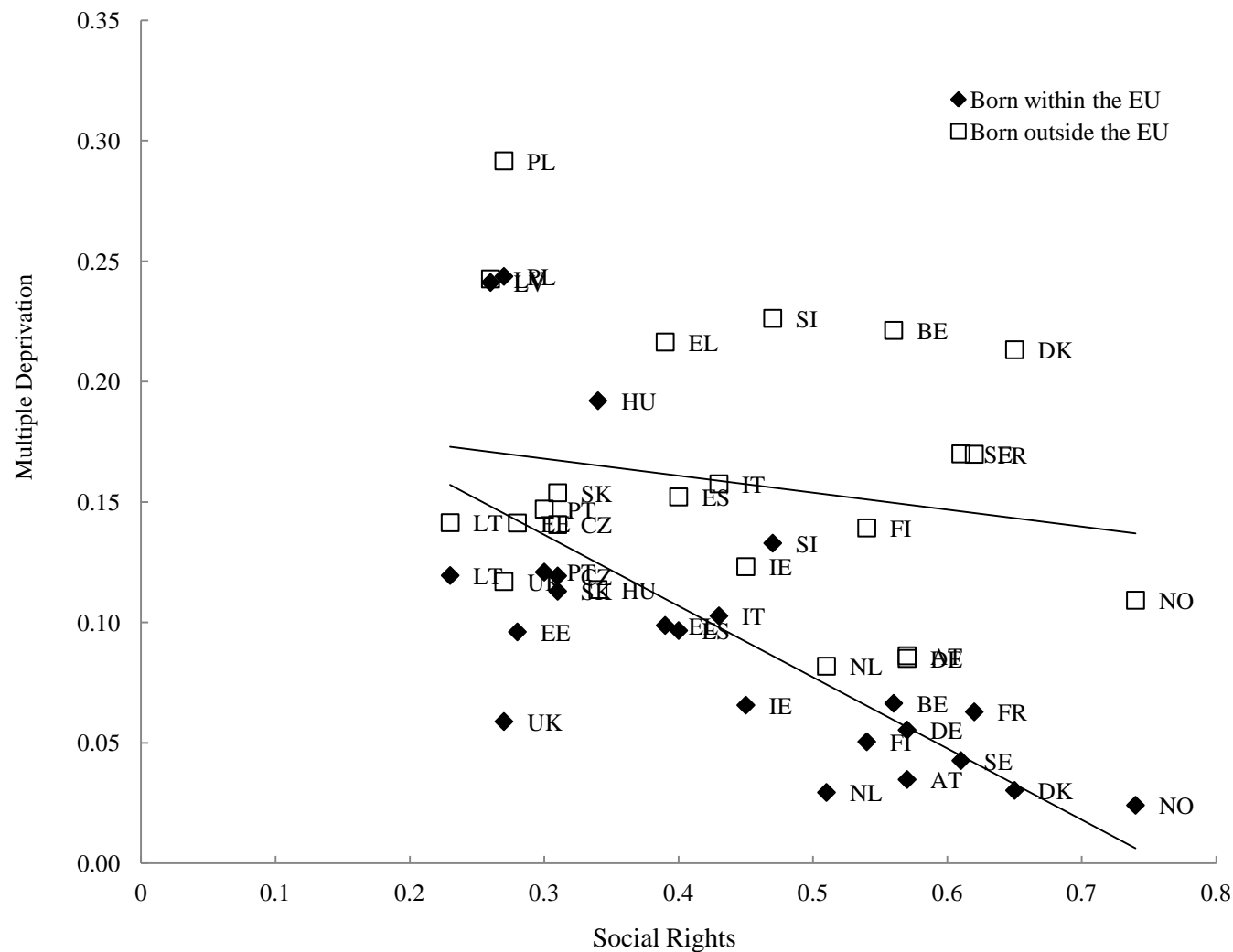
**Sebastian Sirén** [sebastian.siren@sofi.su.se](mailto:sebastian.siren@sofi.su.se)

The Swedish Institute for Social Research (SOFI), Stockholm University, Sweden

## Social insurance net replacement rates in 29 European countries and 5 selected non-European countries 2010



# The level of social rights and the rate of multiple deprivation according to birth country in 23 EU countries



Source: SPIN and EU-SILC (from Ferrarini, Nelson and Sjöberg, unpublished paper)